



16 Wrights Lane

CW11 2JX

Asking Price £250,000



2



1



1



STEPHENSON BROWNE

The Meadows is an exclusive new development of just thirteen beautifully crafted detached and semi-detached homes, offering a choice of two to four bedrooms in an outstanding location. Created by Edgefold Homes, renowned for their insight, experience, and attention to detail, each property has been thoughtfully designed to combine quality, style, and practicality. Drawing on shared building expertise, every home features intuitive design solutions that enhance everyday living, ensuring a superior standard of comfort, functionality, and finish throughout.



The Greenfield

Stylish, Practical & Ready to Move In - The Greenfield is a beautifully designed two-bedroom home, ideal for first-time buyers, young families, or those looking to downsize without sacrificing style. The light-filled, spacious lounge offers a perfect setting for cosy evenings or entertaining, while a handy store room and ground-floor WC add everyday practicality.

At the heart of the home, the generous kitchen and dining area, with French doors leading onto the garden, forms a bright, welcoming hub for cooking, dining, and family time. Cleverly planned storage solutions ensure every space feels organised and clutter-free, while large windows bring in natural light, enhancing the sense of calm and openness.

Upstairs, two well-sized bedrooms offer comfort and versatility — with the main bedroom providing a peaceful retreat, and the second bedroom perfect for guests, a nursery, or home office. A contemporary bathroom and additional storage complete the upper floor, making The Greenfield an ideal choice for modern, light-filled living.

Lounge

10'5" x 12'9"

Kitchen / Dining

13'9" x 13'5"

Store

5'10" x 2'11"

WC

2'11" x 5'2"

Bedroom One

13'9" x 11'5"

Bedroom Two

13'9" x 10'2"

Store

2'11" x 2'11"

Bathroom

6'6" x 6'10"

Tenure

We understand from the vendor that the property is freehold. We would however recommend that your solicitor check the tenure prior to exchange of contracts.

AML Disclosure

Agents are required by law to conduct Anti-Money Laundering checks on all those buying a property. Stephenson Browne charge £49.99 plus VAT for an AML check per purchase transaction. This is a non-refundable fee. The charges cover the cost of obtaining relevant data, any manual checks that are required, and ongoing monitoring. This fee is payable in advance prior to the issuing of a memorandum of sale on the property you are seeking to buy.

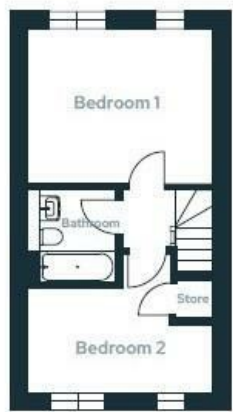
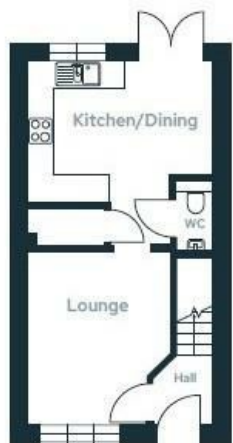
Why Choose SB Sandbach To Sell Your Property?

We have been operating in the town for over 15 years, and in recent times have consistently been the market leaders. Our experienced team are dedicated in achieving the best price for you and giving you the best service possible. If you would like a FREE market appraisal, please call us on 01270 763200 opt 1 to arrange a no-obligation appointment.

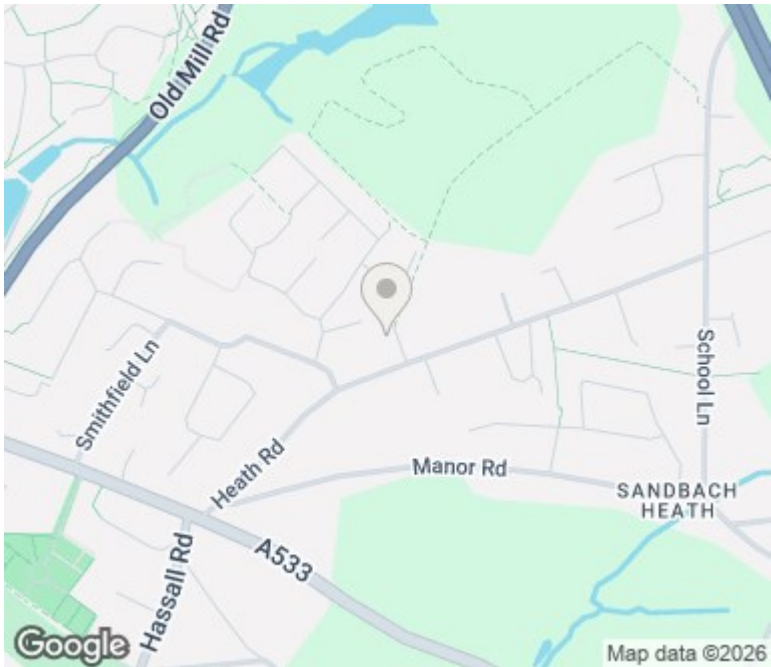


- Anticipated Completion Date: 18/05/26
- Reserve Today
- 10 Year ICW New Home Warranty
- High Quality Black Double Glazed uPVC Windows / Northstone Causeway Slate Effect Roof Tiles
- Sandbach Heath Development of 13 Homes - Only 8 Remaining Plots
- LED Downlighting in Kitchen and Bathrooms / AEG Appliances
- BT Fibre Broadband Connection
- Flag Paving to Private Driveways, Paths and Patios / Turf to Front and Rear Gardens
- 7kW Car Charger and Solar Panels
- Baxi Assure Combination Boiler

Floor Plan



Area Map



Energy Efficiency Rating		
	Current	Potential
Very energy efficient - lower running costs		
(92 plus) A		
(81-91) B		
(69-80) C		
(55-68) D		
(39-54) E		
(21-38) F		
(1-20) G		
Not energy efficient - higher running costs		
England & Wales	EU Directive 2002/91/EC	

Environmental Impact (CO ₂) Rating		
	Current	Potential
Very environmentally friendly - lower CO ₂ emissions		
(92 plus) A		
(81-91) B		
(69-80) C		
(55-68) D		
(39-54) E		
(21-38) F		
(1-20) G		
Not environmentally friendly - higher CO ₂ emissions		
England & Wales	EU Directive 2002/91/EC	

Viewing

Please contact our Sandbach office if you wish to arrange a viewing appointment or require further information.

NOTICE: Stephenson Browne for themselves and for the vendors or lessors of this property whose agents they are give note that: (1) the particulars are set out as a general guideline only for the guidance of intending purchasers or lessees. and do not constitute, nor constitute part of, an offer or contract; (2) all descriptions, dimensions, references to condition and necessary permissions for use and occupation, and other details are given in good faith and are believed to be correct but any intending purchasers or tenants should not rely on them as statements or representations of fact but must satisfy themselves by inspection or otherwise as to be the correctness of each theme; (3) no person in the employment of Stephenson Browne has any authority to make representation or warranty in relation to this property; (4) fixtures and fittings are subject to a formal list supplied by the vendors solicitor. Referring to: Move with Us Ltd Average fee: £123.64